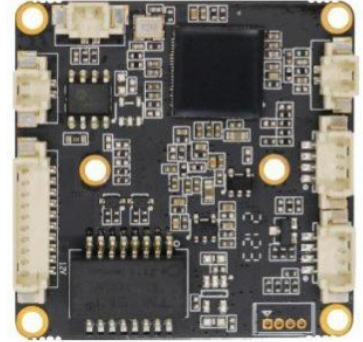
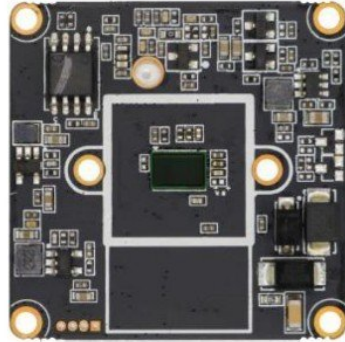
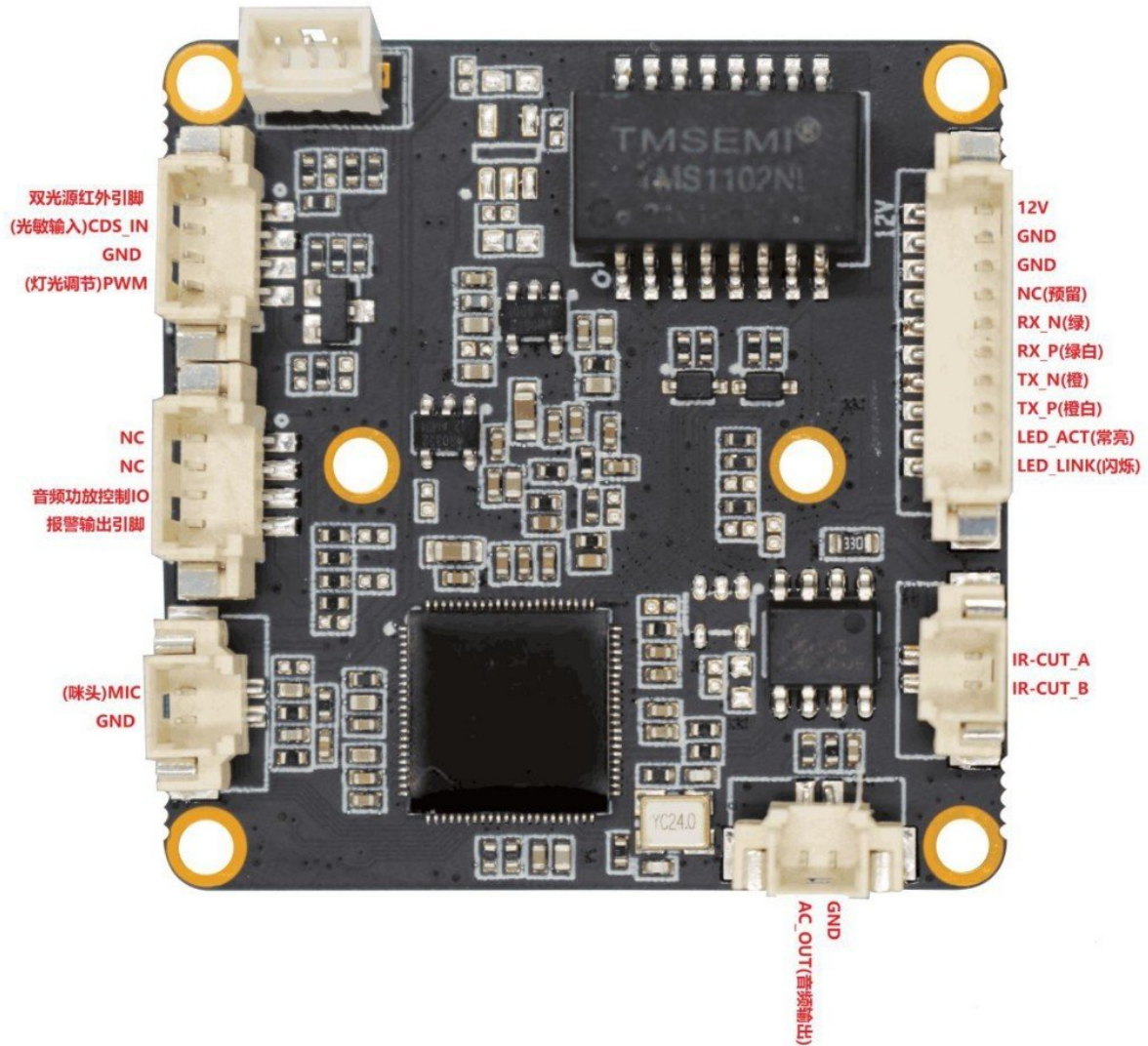


## F3G Intelligent sound light warning camera Specification



1. 1/2.9" 3MP image sensor;
2. Support H264, H.265  
Main-stream: 3MP(2304\*1296)/2MP(1920\*1080)/1MP(1280\*720);  
Sub-stream: 448P(800\*448)/D1(704\*576)/360P(640\*360)/CIF(352\*288);
3. Support dual stream output simultaneously;
4. Support D-WDR, 3D-NR, BLC, Auto-White balance for different environments;
5. Support ONVIF, can connect with other company's NVR;
6. Support image shutter, can cover the privacy area
7. Support OSD character overlay and network timing
8. Support audio input and output, two-way intercom, audio and video synchronization;
9. Support a variety types of light board, can support light board with cds or without cds
10. support the human detection function;
11. Support sound and light linkage alarm;
12. Support automatic maintenance function;
13. Support mobile surveillance(iOS, android),Web and VMS;

## Wiring diagram



IR-CUT direction Description: IR-cut\_B is + (red), IR-cut\_A is - (black)

Audio power amplifier control I / O: the audio expansion board that needs to be opened at high level can use this pin to control

Function	
D/N switch	Support D/N switching(IR-CUT optional)
White balance	Support auto white balance
BLC	Support
Noise Reduction	Support 3D NR
WDR	Support D-WDR
Motion Detection	Support
Privacy shelter	Support
Mirror	Support
OSD	Support OSD setting, drag the position freely
Restart	Support
Intelligent function	
Human detection	It supports human detection and can detect human shape for intelligent alarm.
Voice Announcements	Support voice broadcast after human detection.
Light alarm	Support linkage light alarm when human form is detected.
Video	
Compression	H.264, H.265
Resolution	Main stream: 3MP(2304*1296), 2MP(1920*1080), 1MP(1280*720)
	Sub-stream: 448P(800*448)/D1(704*576)/360P(640*360 )/ CIF(352*288)
Frame rate	3MP 30fps
Video Adjustment	Brightness, saturation, chroma, contrast and sharpness adjustment
Network	
Ethernet	RJ-45 10M/100M self-adaption
Protocol	ONVIF, P2P, CGI, HTTP, TCP/IP, IPv4, RTSP, UDP, NTP, DHCP, DNS, IP Filter
Access protocol	Support ONVIF/private protocol/CGI
Max users	3 main stream, 3 sub-stream



Client	IOS, Android, Windows
<b>Audio</b>	
Audio	G.711U, G711A
Input	1CH In
Output	1CH Out
<b>General specifications</b>	
Size	38x38 single board
Temperature	-30°C ~ +80°C
Power	DC12V 2A

Please pay attention to heat dissipation when installing the complete camera, especially the housing with small plastic structure;

General camera accessories: housing, lamp board, module; Poe camera accessories: housing, lamp board, module, Poe module; Besides the temperature of the module itself, the lamp board and Poe module are also large heat sources; The lamp board accounts for 60%-80% of the power consumption of the whole camera and is the largest heat source. If the built-in Poe is added, it will further squeeze the internal space and block the internal heat dissipation. In addition to the obvious heat and dryness problems caused by poor heat dissipation, there will also be peeling of internal connecting lines, which will further lead to problems such as crash and disconnection, and affect the service life of the whole camera.

The improvement of heat dissipation can be solved by strengthening the heat dissipation of the housing, reducing the power consumption of the lamp board, and using external Poe.

## 4.概要 (Outline)

### 4.1 应用范围 (Application)

适用于我司向贵司提供的镜头产品(The below datasheet is only suit to YTOT products.)

## 5 主要参数 (Main Items)

### 5.1 光学参数规格 (Optical Specifications)

NO.	项目 (Items)	具体规格 (Specification)					
1	F No.	1.0±10%					
2	焦距(Focal-Length)	4.0 ±5%					
3	光学后焦 (Optical Back Focal Length)	3.82±0.2 (in air)					
4	机械后焦 (Mechanical Back Focal Length)	3.72±0.2 (in air)					
5	镜头总长(TTL)	22.34±0.2 (in air)					
6	像面大小 (Image circle)	Φ6.8 (MAX)					
7	镜片构成 (Lens structure)	2G5P (第一枚镜片为塑胶镜片时, 仅可使用酒精擦拭3次) (The first optical lens is plastic lens, could only be wiped with alcohol 3 times)					
8	接口 (Mount)	M12*P0.5					
9	镜头与底座螺纹配合扭力 (Clamp Force)	60-600gf-cm					
10	视场角(FOV)	sensor型号	H(水平)		V(垂直)		D(对角)
		1/2.7"(16:9)	87.0°		46.2°		103.7°
		1/2.8"(16:9)	83.5°		44.6°		99.1°
		1/2.9"(16:9)	80.2°		43.0°		94.7°
11	光学畸变 (Optical Distortion)	1/2.7"	-36.8%	1/2.8"	-33.8%	1/2.9"	-31.0%
12	相对亮度 (Relative Illumination)	1/2.7"	42%	1/2.8"	44%	1/2.9"	46%
13	最大主光线夹角 (CRA)	1/2.7"	10.5°	1/2.8"	10.1°	1/2.9"	9.7°
14	近摄距 (M.O.D)	2m					
15	解像标准 (Resolution)	分辨率 (Resolution): 2592×1944 (5MP)					
16	芯片倾斜规格 (Tilt tolerance of sensor)	≤5"					
17	重量 (Weight)	/					
18	操作方法 (Operation)	聚焦 (Focus)			手动 (Manual)		
		光圈 (Iris)			固定 (Fixed)		
19	环保&安全 (HSF&Safety)	RoHS					