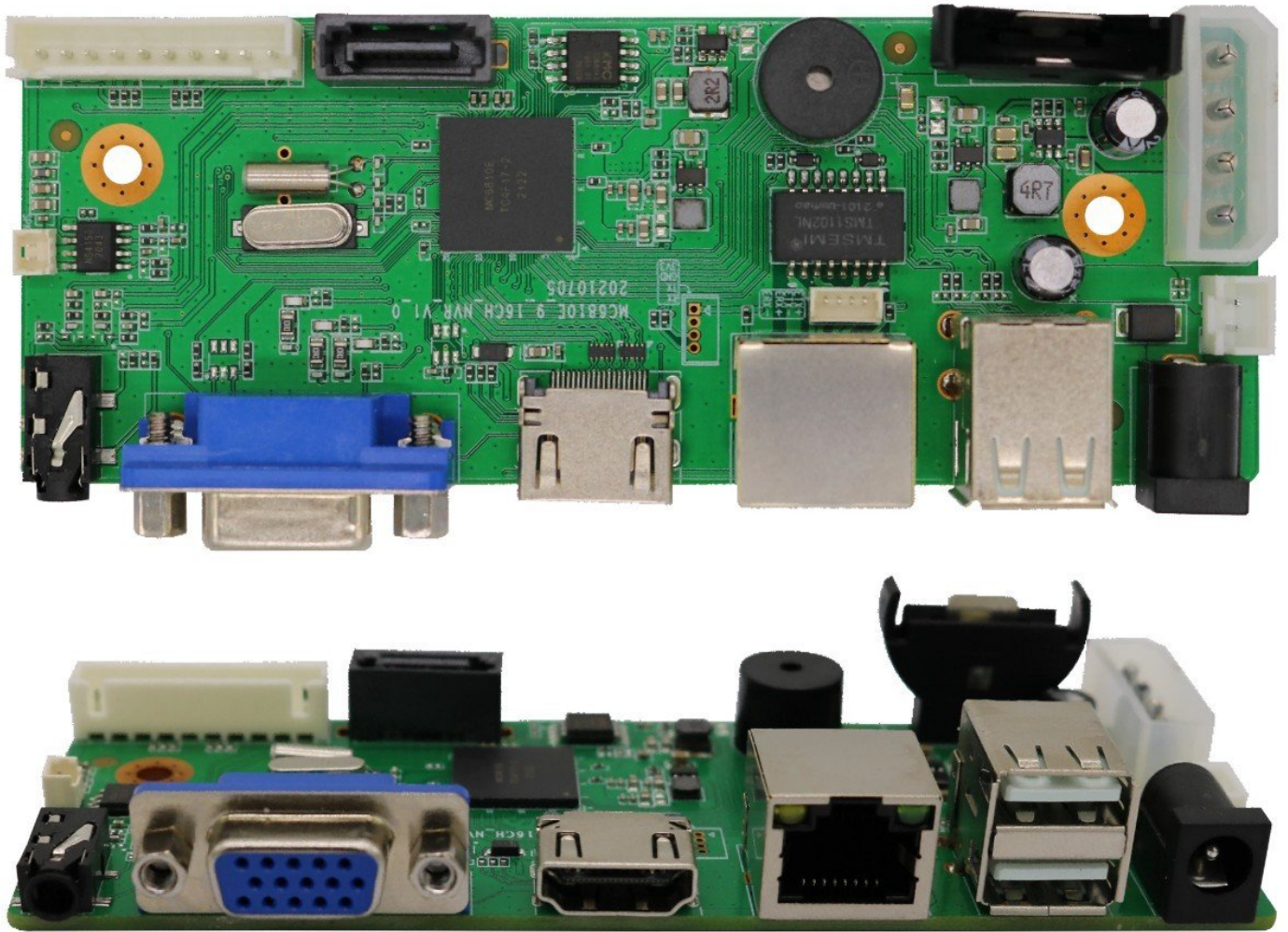


## RS-N9916A-V1 Specification



### Technique Features

- new UI is convenient and easy to use, support automatically added, across a network segment, and other functions.
- the camera after changing IP can be automatic reconnection;
- support pa speaker and 3.5 mm audio interface; Support audio intercom (with headset two-in-one adapter);
- supports VGA, HDMI output at the same time, the maximum resolution HDMI support 4 k.
- support APP push alarm function;

- support cloud upgrade function;
- support human, vehicle detection alarm function (front camera support);
- support electronic fence, cross test, leave detection, traffic statistics function (front camera support);
- support alarm linkage function such as speech, local support humanoid, car intelligent playback;
- support 5 mp camera 16 road access, switch to 10 road mode can support 4 k no.10 camera access;
- support ONVIF protocol;
- support GB28181 agreement, to provide convenient access platform;
- support network and USB backup function;
- support to control the front camera image parameter function;
- can use EasyVMS computer remote monitoring and playback the video client software;
- can use P6Slite phone software remote monitoring and video playback;
- can use local logon P6Slite mobile phone software and code;

## Product Parameter

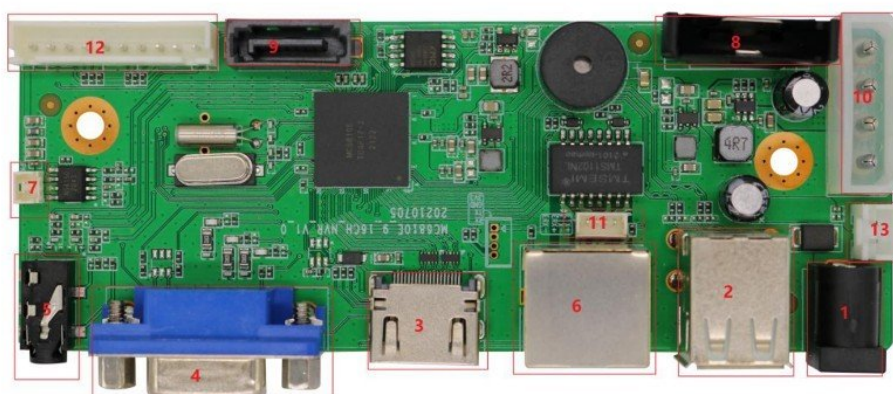
System	
Model number	RS-N9916A-V1
Operating system	Embedded Linux operating system
interface	
Operating interface	Graphical interface, support mouse operation
Picture display	1/4/6/9/16 picture
Support language	Simplified Chinese, Traditional Chinese, English, Japanese, Korean, French, German, Italian, Russian, Thai, Indonesian, Turkish, Portuguese, Spanish, Vietnamese, Korean, Greek, Czech, Arabic, Persian



Video	
Video access	16-channel 5MP, dual-stream access / 10-channel 4K access (need to be changed to 10-channel mode)
Video frame rate	30 frames
Video output	VGA*1, HDMI*1
Image decoding	H.264/H.265
Head control	The front camera with the pinion head device is controlled through the network
Playback channel	1 channel 5MP/2 channel 4MP/4 channel 3MP playback
Video recording mode	Timing video, motion detection video, manual video, intelligent video
Video query	Time playback, browsing playback, intelligent playback, event retrieval
AI Function	
Electronic fence	Support, can be linked push, big picture, video recorder voice alarm function (front-end camera support)
Transboundary detection	Support, can be linked push, big picture, video recorder voice alarm function (front-end camera support)
Off-duty detection	Support, can be linked push, big picture, video recorder voice alarm function (front-end camera support)
Passenger flow statistics	Support to query passenger flow data (front-end camera support required)
playback	Support AI humanoid, car playback function, playback more accurate.
Audio	
Voice alarm	Support linkage video recorder local audio warning broadcast, built-in a variety of warning voice.
Audio format	G 711U, G 711A, G 726
Audio intercom	support
Audio input	According to the number of channels 1:1 network audio input
Audio output	Support HDMI output audio, 3.5mm audio output interface, 1.25 seat speaker output
Storage backup	
Video preservation	Local hard disk, network (Easytvms remote recording)
Backup mode	Network backup, U disk
Remote monitoring	
Mobile phone monitoring	P6Slite APP connected in seconds
Computer monitoring	VMS client remote LAN or WAN monitoring
agreement	Support for TCP/IP, IPv4, DHCP, NTP, RTSP, ONVIF, P2P, network protocols such as GB28181;
External interface	
Video output	One VGA port and one HDMI port
Network interface	One RJ45 10/100M adaptive Ethernet port
USB interface	2 USB 2.0 ports

Hard disk interface	1 SATA 2.0 port; SATA ports support a maximum capacity of 8 TB
<b>Other</b>	
Power supply	DC12V 2A
Power consumption	≤15W (Bare machine)
Working environment	-10°C~+50°C

### Interface definition



1	DC 12V	2	USB	3	HDMI	4	VGA
5	3.5mm audio interface (convertible I/O)	6	RJ45 network port	7	Horn interface	8	battery
9	Hard disk SATA data cable	10	Hard disk power port	11	Network extension	12	Front panel indicator
13	12V output						

The contents of this specification are only intended to provide guidance for users. Our company will update the contents of this specification according to the enhancement or change of product functions, and will periodically improve and update the software functions described in this specification. The updated contents will be reflected in the new version of the specification without prior notice.

